



Features

- All-steel flexible couplings.
- High rigidity high torque.
- Low moment of inertia backlash-free.
- Suitable to middling large servo system exact transmission.
- Compensating of axial radial and angular shaft misalignments.
- Long service life maintenance-free.
- Clamp type.
- WTM-C Body : S45C alloy.

特性

- 一體化全剛簧片式聯軸器。
- 高剛性.高扭矩
- 低慣性.無背隙
- 適於中大型伺服馬達精密.定位傳動
- 具軸向.徑向及角度偏差補正功能.
- 免保養.壽命長.
- 夾鉗式固定
- WTM-C 本體：合金鋼材質。

Specifications

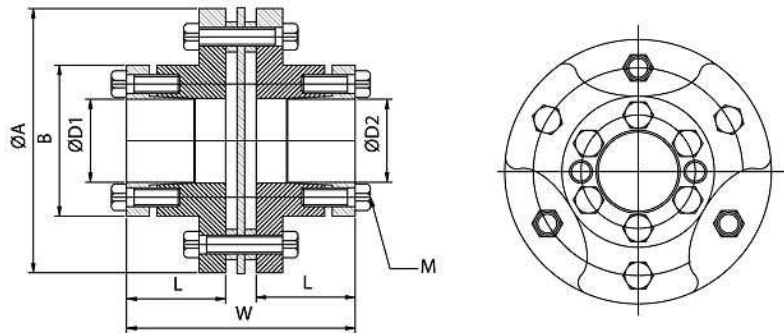
unit:mm

| Product No 產品編號 | Rated Torque 常用扭矩 (N.m) | Max. Torque 最大扭矩 (N.m) | Max. Rotational Frequency 最高迴轉數 (min ⁻¹) | Moment* Of Inertia 慣性 (kg.m ²) | Error of Eccentricity 容許偏心量 (mm) | Error of Angularity 容許角偏差 (°) | Error of Shaft End-play 容許軸向位差 (mm) |
|--------------------|-------------------------------|------------------------------|--|---|--|-------------------------------------|---|
| WTM-01C | 30 | 60 | 11000 | 1.7×10 ⁻⁴ | 0.15 | 1° | ±0.6 |
| WTM-03C | 40 | 80 | 10700 | 2.7×10 ⁻⁴ | 0.15 | 1° | ±0.6 |
| WTM-05C | 95 | 190 | 9300 | 5.5×10 ⁻⁴ | 0.20 | 1° | ±0.8 |
| WTM-10C | 140 | 280 | 8400 | 9.7×10 ⁻⁴ | 0.20 | 1° | ±1.0 |
| WTM-20C | 225 | 450 | 6700 | 3.0×10 ⁻³ | 0.3 | 1° | ±1.2 |
| WTM-40C | 400 | 800 | 5900 | 5.3×10 ⁻³ | 0.4 | 1° | ±1.4 |

*Max. Bore Moment of Inertia/最大孔徑時慣性矩

Clamp type

● WTM-C



Dimension

unit:mm

| Product No 產品編號 | A | B | L | W | Stock Bores 標準孔徑 D1×D2(公差 H8) | | M |
|--------------------|-----|------|----|-----|-------------------------------------|-----------|------|
| | | | | | Min D1 | Max D2 | |
| WTM-01C | 70 | 43 | 30 | 68 | 12 | 22 | 4×M6 |
| WTM-03C | 80 | 49.5 | 30 | 68 | 15 | 25 | 6×M6 |
| WTM-05C | 92 | 62 | 35 | 78 | 19 | 35 | 6×M6 |
| WTM-10C | 102 | 70 | 40 | 88 | 22 | 45 | 6×M6 |
| WTM-20C | 128 | 85 | 48 | 107 | 35 | 55 | 6×M8 |
| WTM-40C | 145 | 100 | 65 | 141 | 40 | 65 | 8×M8 |

When Ordering

When placing an order, make sure to include product no.
And stock bores(both sides) of product.

WTM-05C - Ø25 X Ø32

Product No D1 D2