



## Features

- Slippage of hub and spacer enables high allowable eccentricity and angularity.
- Minimized load on shafts.
- High torsional stiffness and excellent response.
- Simple configuration enables easy assembly.
- Maintenance-free excellent resistance to oil and Electrical insulation.
- Standardized models with different finished bores.
- Setscrew type.
- MFL Body : Aluminum alloy.

## 特性

- 藉轂和間隔環滑動、取得一極大允許偏心率及角偏度量
- 軸負荷小
- 高扭力元件、高靈敏反應
- 簡單設計、容易組裝
- 免保養、優異抗油性和絕緣性
- 標準品備有不同孔徑
- 止付螺絲式固定
- MFL 本體：鋁合金材質。

## Specifications

unit:mm

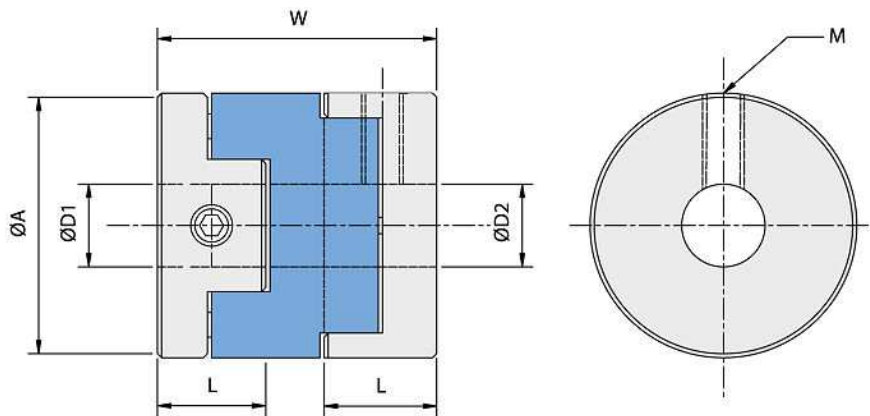
Product No 產品編號	Rated Torque 常用扭矩 (N.m)	Max. Torque 最大扭矩 (N.m)	Max. Rotational Frequency 最高迴轉數 (min <sup>-1</sup> )	Moment* Of Inertia 慣性 (kg.m <sup>2</sup> )	Error of Eccentricity 容許偏心率 (mm)	Error of Angularity 容許角偏差 (°)	Mass** 質量 (g)
MFL-16	0.7	1.4	9500	3.0×10 <sup>-7</sup>	1.0	3°	6.5
MFL-20	1.2	2.4	7600	1.1×10 <sup>-6</sup>	1.5	3°	14.0
MFL-25	2.0	4.0	6100	2.7×10 <sup>-6</sup>	2.0	3°	27.0
MFL-32	4.5	9.0	4800	9.0×10 <sup>-6</sup>	2.5	3°	45.0
MFL-40	9.0	18.0	3800	2.2×10 <sup>-5</sup>	3.0	3°	80.0
MFL-50	18.0	36.0	3100	6.3×10 <sup>-4</sup>	3.5	3°	150.0

\*Max. Bore Moment of Inertia/最大孔徑時慣性矩

\*\*Max. Bore Mass/最大孔徑時質量

## Setscrew type

● MFL



## Dimension

unit:mm

Product No 產品編號	A	L	W	Stock Bores 標準孔徑 D1×D2(公差 H8)		M
				Min D1	Max D2	
MFL-16	16	7	18	4	6	M3
MFL-20	20	9	23	4	8	M4
MFL-25	25	11	28	5	10	M5
MFL-32	32	13	33	6	14	M6
MFL-40	40	14	32	10	16	M6
MFL-50	50	17	38	12	20	M8

## When Ordering

When placing an order, make sure to include product no.

And stock bores(both sides) of product.

## MFL-20 - Ø5 X Ø8

Product No    D1    D2