

MFC

Flexible couplings

MFCS



Features

- Ideal one-body metallic spring flexible couplings.
- Zero backlash.
- Complete absorption of eccentricity angularity, and end-play by spring action.
- High torsional stiffness and response.
- Identical clockwise and anticlockwise rotational characteristics.
- Maintenance-free, oil and chemical resistant.
- Setscrew type.
- MFC Body : Extra Super Duralumin.
- MFCS Body : Stainless steel.

特性

- 完美單一本體，撓性聯軸器。
- 零作用力。
- 藉由彈性作用，完美吸收軸偏移、角偏差、軸端部位插。
- 高扭力，高負荷
- 可正逆轉特性。
- 免保養、抗油、抗化學性。
- 止付螺絲式固定
- MFC 本體：鋁合金材質。
- MFCS 本體：不銹鋼材質。

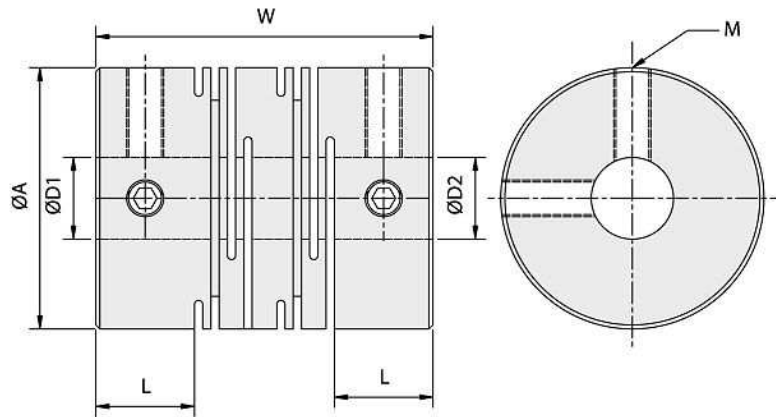
Specifications

unit:mm

Product No 產品編號	Rated Torque 常用扭矩 (N.m)	Max. Torque 最大扭矩 (N.m)	Max. Rotational Frequency 最高迴轉數 (min ⁻¹)	Moment* Of Inertia 慣性 (kg.m ²)	Error of Eccentricity 容許偏心率 (mm)	Error of Angularity 容許角偏差 (°)	Error of Shaft End-play 容許軸向位差 (mm)	Mass** 質量 (g)
MFC-16	0.3	0.6	24000	3.4×10 ⁻⁷	0.10	2°	±0.4	8.2
MFC-20	0.5	1.0	19000	8.6×10 ⁻⁷	0.10	2°	±0.4	15.0
MFC-25	1.1	2.2	15000	2.2×10 ⁻⁶	0.15	2°	±0.5	28.0
MFC-32	2.0	4.0	12000	9.0×10 ⁻⁶	0.15	2°	±0.5	63.0
MFC-40	5.0	10.0	9600	2.8×10 ⁻⁵	0.20	2°	±0.5	128.0
MFC-50	10.0	20.0	7700	1.1×10 ⁻⁴	0.20	2°	±0.5	250.0
MFCS-16	0.5	1.0	24000	8.6×10 ⁻⁷	0.10	2°	±0.3	23.0
MFCS-20	1.0	2.0	19000	2.4×10 ⁻⁶	0.10	2°	±0.3	40.0
MFCS-25	2.1	4.2	15000	7.2×10 ⁻⁶	0.15	2°	±0.4	80.0
MFCS-32	3.5	7.0	12000	2.6×10 ⁻⁵	0.15	2°	±0.5	170.0

*Max. Bore Moment of Inertia/最大孔徑時慣性矩

**Max. Bore Mass/最大孔徑時質量



Dimension

unit:mm

Product No 產品編號	A	L	W	Stock Bores 標準孔徑 D1×D2(公差 H8)		M
				Min D1	Max D2	
MFC-16	16	6.5	23	4	8	M3
MFC-20	20	7.5	26	5	10	M3
MFC-25	25	8.5	31	5	12	M4
MFC-32	32	12	41	6	14	M4
MFC-40	40	17	56	8	16	M5
MFC-50	50	21	71	10	18	M6
MFCS-16	16	6.5	23	4	8	M3
MFCS-20	20	7.5	26	5	10	M3
MFCS-25	25	8.5	31	5	12	M4
MFCS-32	32	12	41	6	14	M4

When Ordering

When placing an order,make sure to include product no.
And stock bores(both sides) of product.

MFC-32 - Ø8 X Ø12

Product No D1 D2