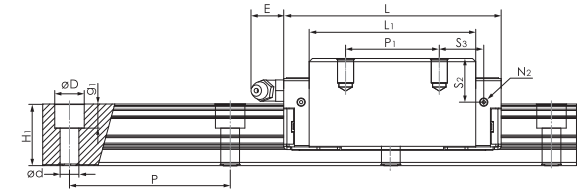
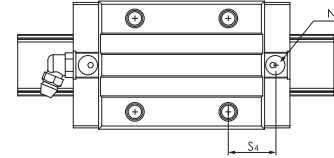
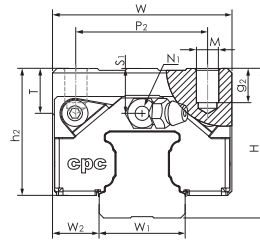


尺寸規格



HRC MN Series

型號規格	組裝尺寸		滑軌尺寸(mm)				滑座尺寸(mm)										額定負荷(KN)					靜扭矩(Nm)			重量		型號規格				
	H	W2	W1	H1	P	Dxdxg1	W	L	L1	h2	P1	P2	MxG2	M1	T	N1	N2	N3	E	S1	S2	S3	S4	C	C0	Mr0		Mp0	My0	滑座(g)	滑軌(g/m)
HRC 15 MN	28	9.5	15	15	60	7.5x4.5x5.3	34	55.5	40.3	24.7	26	26	M4x7	-	6	M3x6.5	M3x6	P3	3.5	8.5	11.5	9.8	10.9	9.9	17.5	140	105	105	200	1290	HRC 15 MN
HRC 20 MN	30	12	20	20	60	9.5x6x8.5	44	69	52	25	36	32	M5x8.5	-	8	M3x7.5	M3x5.5	P4	10	6	9.4	11	11.7	17.1	30.0	325	230	230	318	2280	HRC 20 MN
HRC 25 MN	40	12.5	23	23	60	11x7x9	48	81.2	62.2	34	35	35	M6x9	-	12	M6x7.5	M3x6.5	P4	12	12	16.3	16.6	17.6	24.8	42.5	540	385	385	578	3020	HRC 25 MN
HRC 30 MN	45	16	28	27	80	14x9x12	60	95.5	71.5	38.4	40	40	M8x12	-	12	M6x8.5	M6x5	P5	12	10.5	15	20.8	20.5	32.8	53.7	845	565	565	896	4380	HRC 30 MN
HRC 35 MN	55	18	34	32	80	14x9x12	70	111.2	86.2	47.4	50	50	M8x13	-	14	M6x10	M6x7	P5	12	15	22	23.4	24.1	45.9	82.9	1700	1080	1080	1430	6790	HRC 35 MN
HRC 45 MN	70	20.5	45	39	105	20x14x17	86	135.5	102.5	60.7	60	60	M10x20	-	14	PT1/8x12.5	M6x10.5	P5	14	21.1	28.1	27.3	27.3	71.3	122.1	3200	1910	1910	2794	10530	HRC 45 MN
* HRC 55 MN	80	23.5	53	46	120	24x16x18	100	155.6	118.6	68	75	75	M12x24	-	16	PT1/8x14.5	M6x12.5	P5	14	22	29.5	28.5	29.5	103.4	173.1	5030	3120	3120	4780	14060	HRC 55 MN

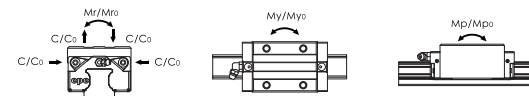
HRC ML Series

HRC 15 ML	28	9.5	15	15	60	7.5x4.5x5.3	34	76.2	61	24.7	26	26	M4x7	-	6	M3x6.5	M3x6	P3	3.5	8.5	11.5	20.1	21.2	13.4	26.9	215	235	235	300	1290	HRC 15 ML
HRC 20 ML	30	12	20	20	60	9.5x6x8.5	44	87.2	70.2	25	50	32	M5x8.5	-	8	M3x7.5	M3x5.5	P4	10	6	9.4	13.1	13.8	20.4	38.5	415	390	390	400	2280	HRC 20 ML
HRC 25 ML	40	12.5	23	23	60	11x7x9	48	105	86	34	50	35	M6x9	-	12	M6x7.5	M3x6.5	P4	12	12	16.3	21	22	30.7	57.7	735	710	710	685	3020	HRC 25 ML
HRC 30 ML	45	16	28	27	80	14x9x12	60	118	94	38.4	60	40	M8x12	-	12	M6x8.5	M6x5	P5	12	10.5	15	21.7	21.8	39.6	70.2	1105	950	950	1150	4380	HRC 30 ML
HRC 35 ML	55	18	34	32	80	14x9x12	70	136.6	111.6	47.4	72	50	M8x13	-	14	M6x10	M6x7	P5	12	15	22	25.1	25.8	54.7	106.5	2185	1755	1755	1953	6790	HRC 35 ML
HRC 45 ML	70	20.5	45	39	105	20x14x17	86	171.5	138.5	60.7	80	60	M10x20	-	14	PT1/8x12.5	M6x10.5	P5	14	21.1	28.1	35	35	89.5	169.1	4430	3460	3460	4060	10530	HRC 45 ML
* HRC 55 ML	80	23.5	53	46	120	24x16x18	100	202.5	165.5	68	95	75	M12x24	-	16	PT1/8x14.5	M6x12.5	P5	14	22	29.5	42	43	129.9	239.7	6965	5855	5855	6060	14060	HRC 55 ML

ERC Series

ERC 25 MS	36	12.5	23	23	60	11x7x9	48	57.4	38.4	30	-	35	M6x9	-	8	M6x7.5	M3x6.5	P4	12	8	12.3	22.2	23.2	18.2	27.3	350	160	160	315	3020	ERC 25 MS
ERC 25 MN	36	12.5	23	23	60	11x7x9	48	81.2	62.2	30	35	35	M6x9	-	8	M6x7.5	M3x6.5	P4	12	8	12.3	16.6	17.6	24.8	42.5	540	385	385	470	3020	ERC 25 MN
ERC 25 ML	36	12.5	23	23	60	11x7x9	48	105	86	30	50	35	M6x9	-	8	M6x7.5	M3x6.5	P4	12	8	12.3	21	22	30.7	57.7	735	710	710	610	3020	ERC 25 ML

註：1.*為準備中的型號 2.表中額定負荷值為無保持鍵型 3.N2為側向注油孔 4.N3為上方注油孔的O型環油封尺寸
5.N2、N3在出貨時，注油孔為封閉，使用前請先打通



有關額定負荷及靜扭矩乃根據ISO14728計算而得，而額定壽命之定義為一批相同的線性滑軌，於額定動負荷在相同運轉條件下，在未因滾動疲乏所導致的材料破壞發生前，有90%的機率可分別行走100km的運行距離。倘若以行走50km的運行距離作為額定壽命計算標準時，其額定動負荷之值則為行走100km的額定動負荷C1008乘以1.26倍。