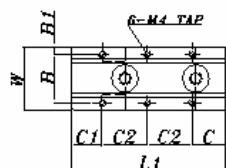


TPS4、TPS5 雙軸心式滑軌、滑塊

一個滑塊合3個滾輪軸承(可調式) One Block with 3 Rolling Bearings
Twin Parallel Shaft System (Adjustable) Anticorrosive Linear Guide

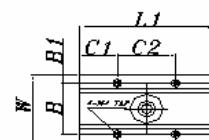
TPS4L



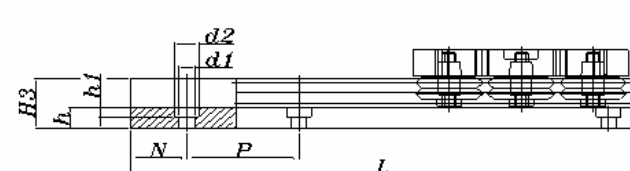
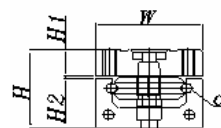
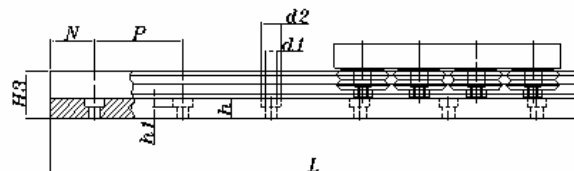
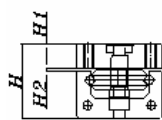
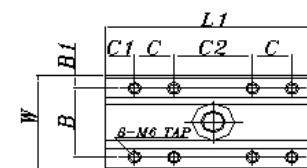
TPS5L



TPS4



TPS5



型號 Model No.	軸徑 Shaft diameter	導輪 數量 Rolling Bearings No.	組合尺寸 Dimension of assembly		滑塊尺寸 Dimensions of block							軌道尺寸 Dimensions of track rail							基本動 定格荷重 Basic dynamic load rating C(kgf)	基本靜 定格荷重 Basic static load rating C(kgf)	容許靜力矩			重量		型號 Model No.		
			H	H2	B	B1	C	C1	C2	L1	W	H1	H3	d1	d2	N	P	Max L			h	h1	To (kgf-m)	Tx (kgf-m)	Ty (kgf-m)		滑塊 Block (kg)	軌道 Track rail (kg/m)
TPS4	4	3	28.5	0.5	26	4	NL	17	26	60	34	10	18	5	8.1	30	60	3000	7.5	4.5	40	55	0.5	2	0.8	0.10	1.10	TPS4
TPS4L	4	4	28.5	0.5	26	4	18.5	16.5	26	87	34	10	18	5	8.1	30	60	3000	7.5	4.5	50	65	0.6	2.5	1.0	0.14	1.10	TPS4L
TPS5	5	3	40	1.5	35	6.5	17.5	13	35	96	48	13.5	25	7	11	30	60	3000	10.5	6.2	80	120	1	3.5	1.4	0.30	2.15	TPS5
TPS5L	5	4	40	1.5	35	6.5	25	14	50	128	48	13.5	25	7	11	30	60	3000	10.5	6.2	100	150	1.5	4	1.6	0.40	2.15	TPS5L

訂購例：

TPS4—B3—R3000L
(1) (2) (3)

- (1)型號
(2)1支滑軌上滑塊之個數
B1：1個 B2：2個 B3：3個
(3)滑軌長度(3000mm)：
軸心：熱處理(HRC60±2)，鍍硬鉻及研磨

Example of identification number：

TPS4—B3—R3000L
(1) (2) (3)

- (1)Model No.
(2)Number of blocks per track rail：
B1：1 Block B2：2 Block B3：3 Block
(3)Length of track rail (3000mm)：
Shaft：Hardened(HRC60±2)ground
and chromium plated

