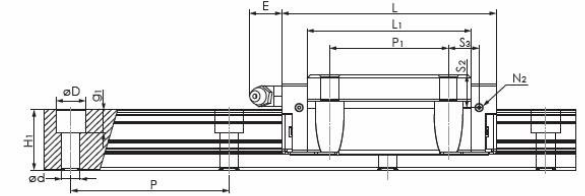
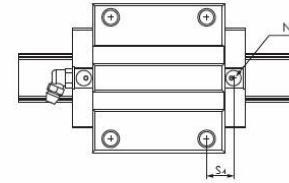
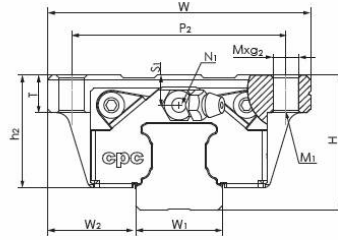


## 尺寸規格



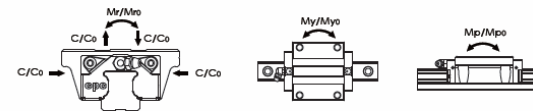
### HRC FN Series

型號規格	組裝尺寸		滑軌尺寸(mm)				滑座尺寸(mm)										額定負荷(KN)				靜扭矩(Nm)			重量		型號規格					
	H	W2	W1	H1	P	DxdxG1	W	L	L1	h2	P1	P2	MxG2	M1	T	N1	N2	Na	E	S1	S2	S3	S4	C	Co		Mro	Mpo	Myo	滑座(g)	滑軌(g/m)
HRC 15 FN	24	16	15	15	60	7.5x4.5x5.3	47	55.5	40.3	20.7	30	38	M5x7	M4	7	M3x6.5	M3x6	P3	3.5	4.5	7.5	7.8	8.9	9.9	17.5	140	105	105	174	1290	HRC 15 FN
HRC 20 FN	30	21.5	20	20	60	9.5x6x8.5	63	69	52	25	40	53	M6x10	M5	10	M3x7.5	M3x5.5	P4	10	6	9.4	9	9.7	17.1	30.0	325	230	230	396	2280	HRC 20 FN
HRC 25 FN	36	23.5	23	23	60	11x7x9	70	81.2	62.2	30	45	57	M8x12	M6	12	M6x7.5	M3x6.5	P4	12	8	12.3	11.6	12.6	24.8	42.5	540	385	385	626	3020	HRC 25 FN
* HRC 30 FN	42	31	28	27	80	14x9x12	90	95.5	71.5	35.2	52	72	M10x15	M8	16	M6x8.5	M6x5	P5	12	7.5	12	14.8	14.5	32.8	53.7	845	565	565	1110	4380	HRC 30 FN
HRC 35 FN	48	33	34	32	80	14x9x12	100	111.2	86.2	40.4	62	82	M10x15	M8	16	M6x10	M6x7	P5	12	8	15	17.4	18.1	45.9	82.9	1700	1080	1080	1550	6790	HRC 35 FN
HRC 45 FN	60	37.5	45	39	105	20x14x17	120	135.5	102.5	50.7	80	100	M12x18	M10	19	PT1/8x12.5	M6x10.5	P5	14	11.1	18.1	17.3	17.3	71.3	122.1	3200	1910	1910	2747	10530	HRC 45 FN
* HRC 55 FN	70	43.5	53	46	120	24x16x18	140	155.6	118.6	58	95	116	M14x20	M12	20	PT1/8x14.5	M6x12.5	P5	14	12	19.5	28.5	29.5	103.4	173.1	5030	3120	3120	5260	14060	HRC 55 FN

### HRC FL Series

HRC 20 FL	30	21.5	20	20	60	9.5x6x8.5	63	87.2	70.2	25	40	53	M6x10	M5	10	M3x7.5	M3x5.5	P4	10	6	9.4	18.1	18.8	20.4	38.5	415	390	390	504	2280	HRC 20 FL
HRC 25 FL	36	23.5	23	23	60	11x7x9	70	105	86	30	45	57	M8x12	M6	12	M6x7.5	M3x6.5	P4	12	8	12.3	23.5	24.5	30.7	57.5	735	710	710	870	3020	HRC 25 FL
HRC 30 FL	42	31	28	27	80	14x9x12	90	118	94	35.2	52	72	M10x15	M8	16	M6x8.5	M6x5	P5	12	7.5	12	25.7	25.8	39.6	70.2	1105	950	950	1385	4380	HRC 30 FL
HRC 35 FL	48	33	34	32	80	14x9x12	100	136.6	111.6	40.4	62	82	M10x15	M8	16	M6x10	M6x7	P5	12	8	15	30.1	30.8	54.7	106.5	2185	1755	1755	2000	6790	HRC 35 FL
HRC 45 FL	60	37.5	45	39	105	20x14x17	120	171.5	138.5	50.7	80	100	M12x18	M10	19	PT1/8x12.5	M6x10.5	P5	14	11.1	18.1	35	35	89.5	169.1	4430	3460	3460	4280	10530	HRC 45 FL
* HRC 55 FL	70	43.5	53	46	120	24x16x18	140	202.5	165.5	58	95	116	M14x20	M12	20	PT1/8x14.5	M6x12.5	P5	14	12	19.5	42	43	129.9	239.7	6965	5855	5855	7480	14060	HRC 55 FL

註：1. \* 為準備中的型號 2. 表中額定負荷值為無保持鏈型 3. N2 為側向注油孔 4. N3 為上方注油孔的 O 型環油封尺寸  
5. Na、Ns 在出貨時，注油孔為封閉，使用前請先打通



有關額定負荷及靜扭矩乃根據 ISO 14728 計算而得，而額定壽命之定義為一批相同的線性滑軌，於額定動負荷在相同運轉條件下，在未因滾動疲乏所導致的材料破壞發生前，有 90% 的機率可分別行走 100km 的運行距離。倘若以行走 50km 的運行距離作為額定壽命計算標準時，其額定動負荷之值則為行走 100km 的額定動負荷 C1000 乘以 1.26 倍。